



SAFE SAILING

MARKER LIGHTS

# ML-100 TECHNICAL DATA SHEET

SPECIFICATIONS	
Material housing	• ABS
Material lens	• LEXAN
Light system	• LED (white, yellow or red)
Light intensity (Red LED 5-Cd only)	• 5- or 15-Cd (Candela)
Surface range	• 2 or 3 NM (nautical miles)
Waterproof	• Down to 500 meters
Activation switch	• Magnet/reed and daylight-sensor
Flash-rate	• 25-flash/min
Software programming	• Flash rate, intensity, sync, daylight switch
Power/battery-type	• 4.5 VDC, 3 x Alkaline D-size battery cells
Lens colour	• White
LED colour standard	• White or yellow
LED colour option	• Red
Dimensions approx.	• Length: 335 mm / Ø: 100 mm
Fixing option	• Floater part.no 98885

## DANIAMANT ML-100 SYNCH MASTER

Synchronization master for use with the Tron ML-series.

Synchronization master current drain @ 4.5 VDC = 20 mA.

Expected operation with ML-100 battery 3 x 1.5 VDC D-sized battery cells = 32 days

LED COLOUR	CANDELA	POWER DC-VOLTAGE	FLASH ON TIME	F L A S H OFF TIME	FLASHES / MIN	CURRENT DRAIN @ 20°C [mA]	PEAK CURRENT @ 20°C [mA]	OPERATIONS HOURS
WHITE	6 CD	4,5V (13500 mAh)	0,5 S	1,9 S	25	17	67	800
YELLOW	6 CD	4,5V (13500 mAh)	0,5 S	1,9 S	25	28	121	470
RED	6 CD	4,5V (13500 mAh)	FIXED	N/A	N/A	190	190	220

## DANIAMANT ML-EL UNIT

The ML-EL unit is used in all the Marker Light ML-series with different programming. Tailor your lighting solutions to specific requirements with programmable features

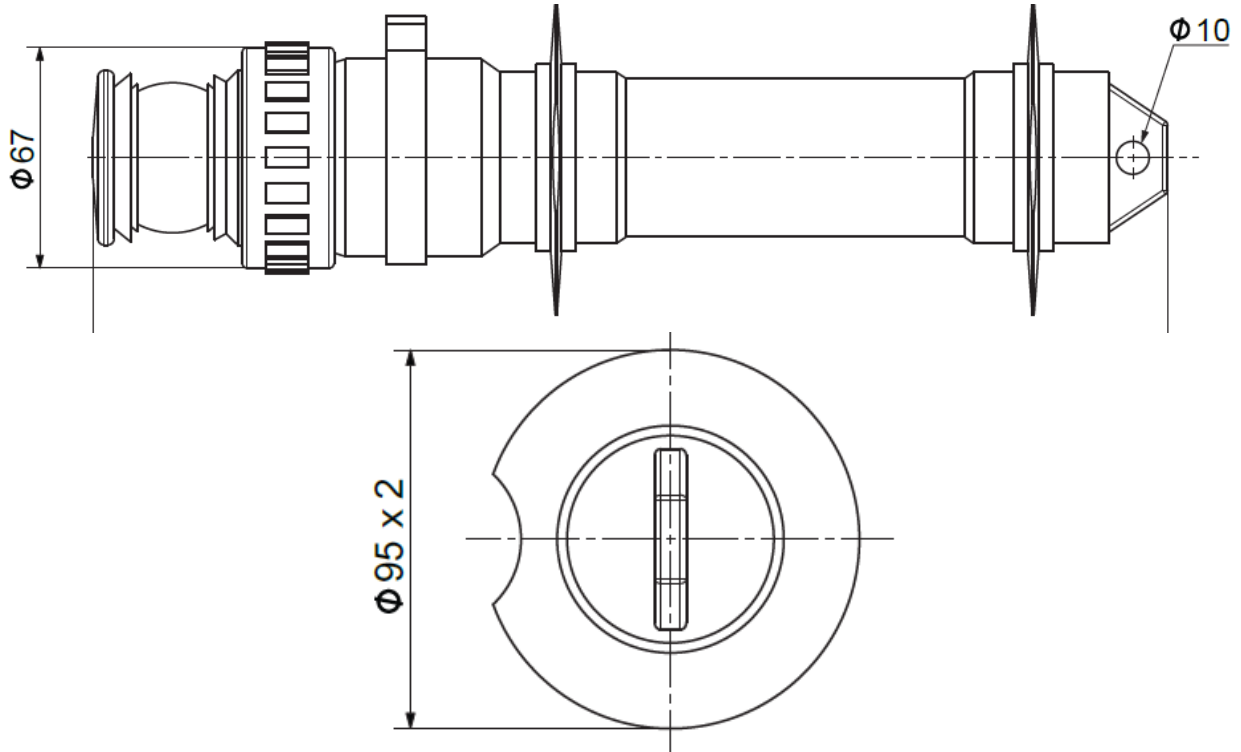


SAFE SAILING

MARKER LIGHTS

**ML-100 TECHNICAL DATA SHEET**

ML-100 TECHNICAL DRAWINGS



ML-100 SYNCH MASTER TECHNICAL DRAWINGS

